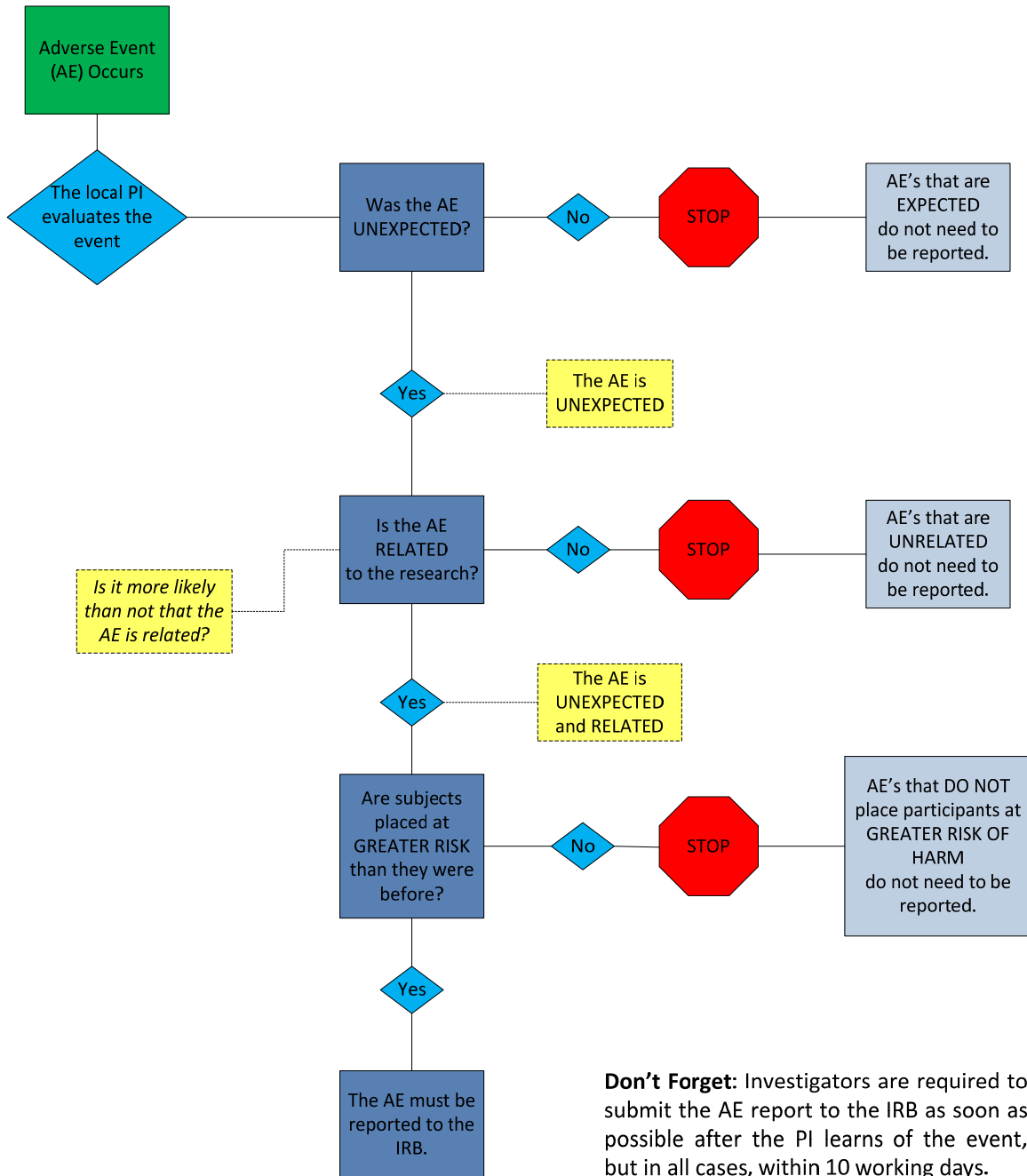




# ADVERSE EVENTS FLOWCHART

Not all adverse events need to be reported to the IRB. So, how do you determine whether or not to submit a report?



**Don't Forget:** Investigators are required to submit the AE report to the IRB as soon as possible after the PI learns of the event, but in all cases, within 10 working days.

Please contact the IRB Office at (801) 581-3655 or [irb@hsc.utah.edu](mailto:irb@hsc.utah.edu) for additional guidance.